

Homes that  
*Celebrate*  
beauty of life!



MODIREALTY  
**WISTERIA**



*Come home to **Kandivali***  
*Come home to **Wisteria***

### **About Modirealty Wisteria**

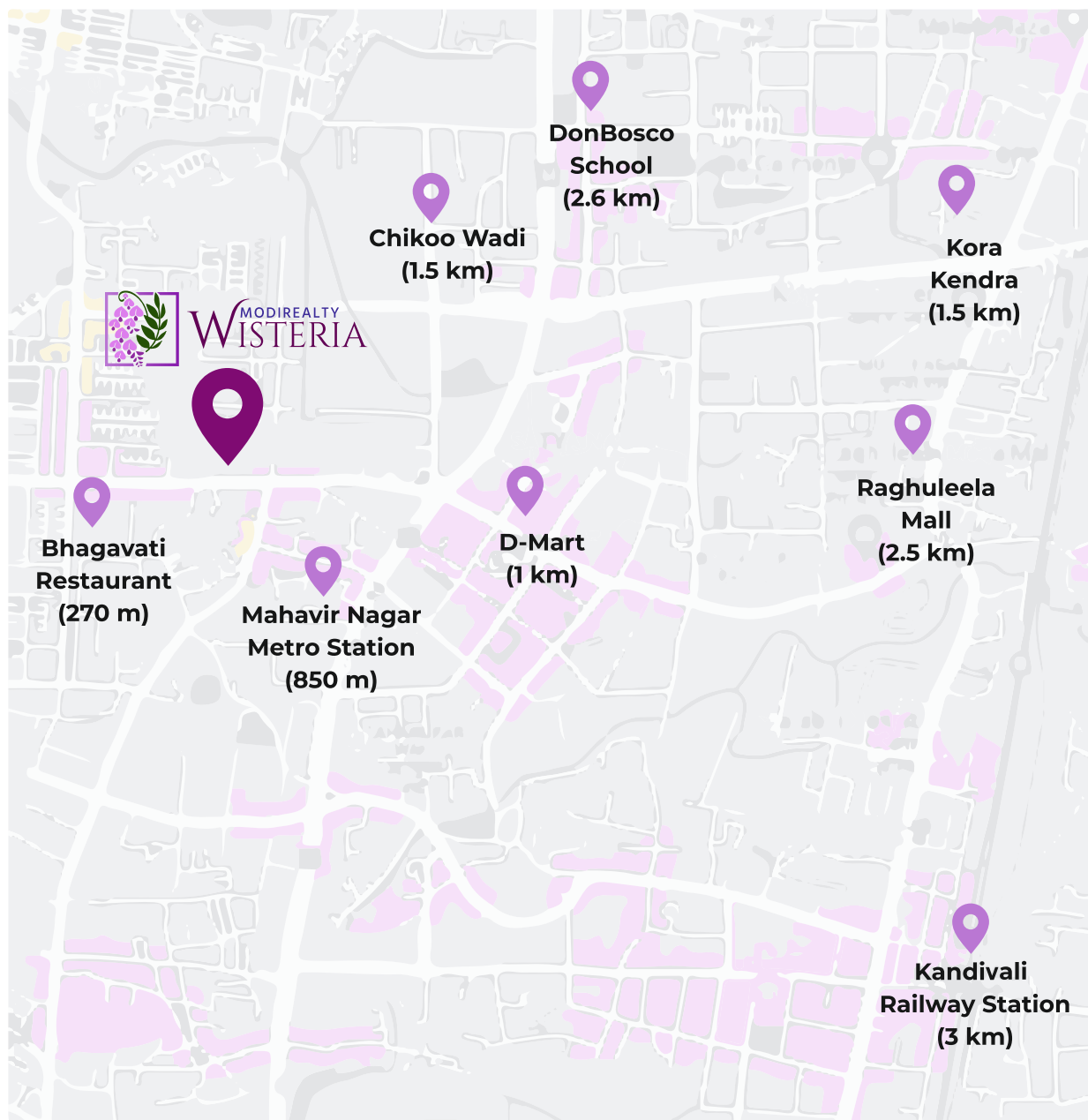
Wisteria Tree, popularly symbolises, immortality and long life. The tree is also known for its impressive growth, mesmerising beauty and honour. As the name denotes, at Modirealty Wisteria, you will always achieve tremendous growth and love in your life. We are the believers of spreading love and

*Crafting Beautiful Memories*



Artistic Impression Of **22 Storey** Wisteria.



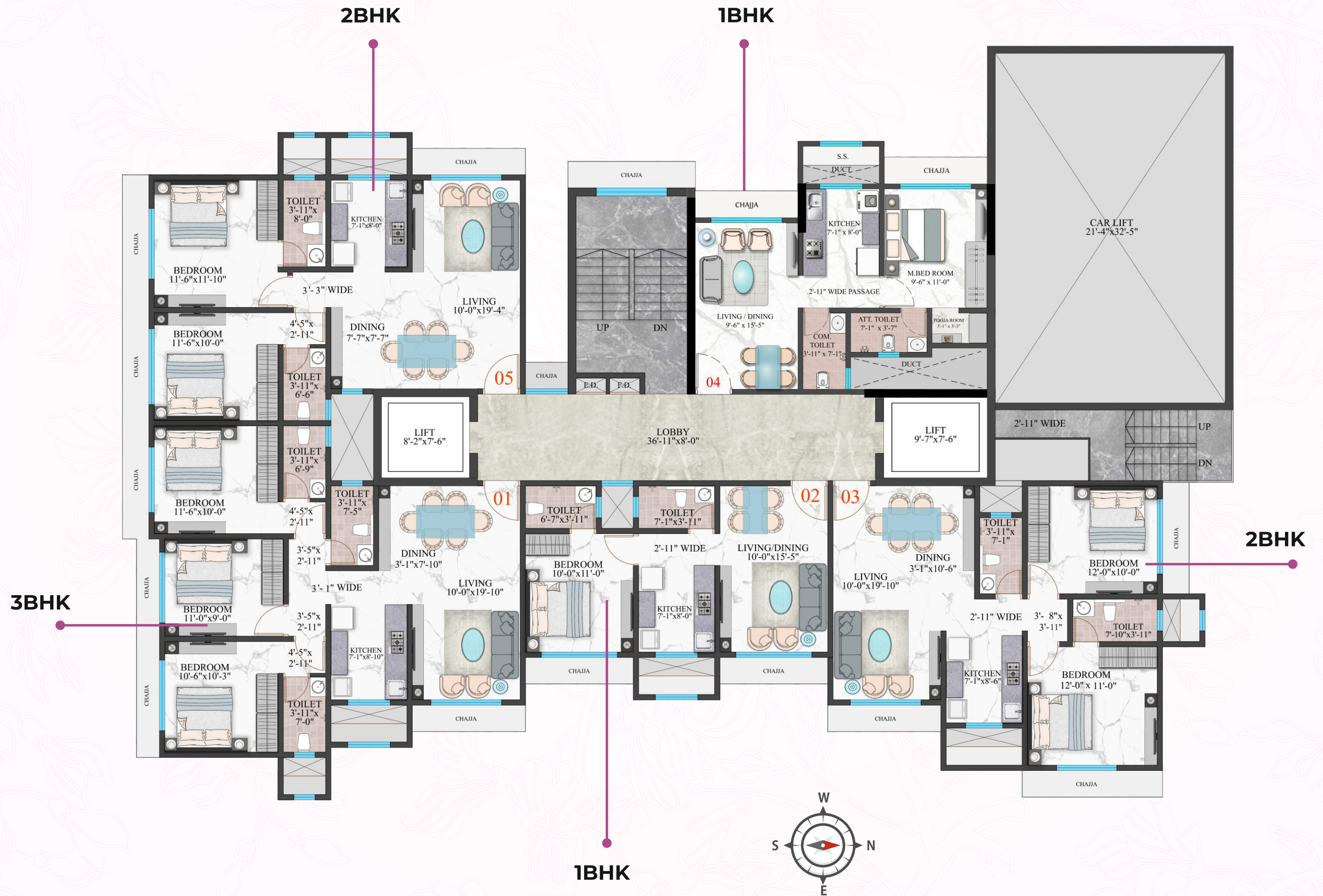


## Unmatched Connectivity

Strategically located in the heart of Mumbai, Kandivali is a dream for a perfect work-life balance. An exemplary infrastructural growth has led to Kandivali West to become one of the most dynamic location in Mumbai. A perfect combination of tranquillity and connectivity, vibrancy and environment and rich culture makes Kandivali West an ideal home destination.

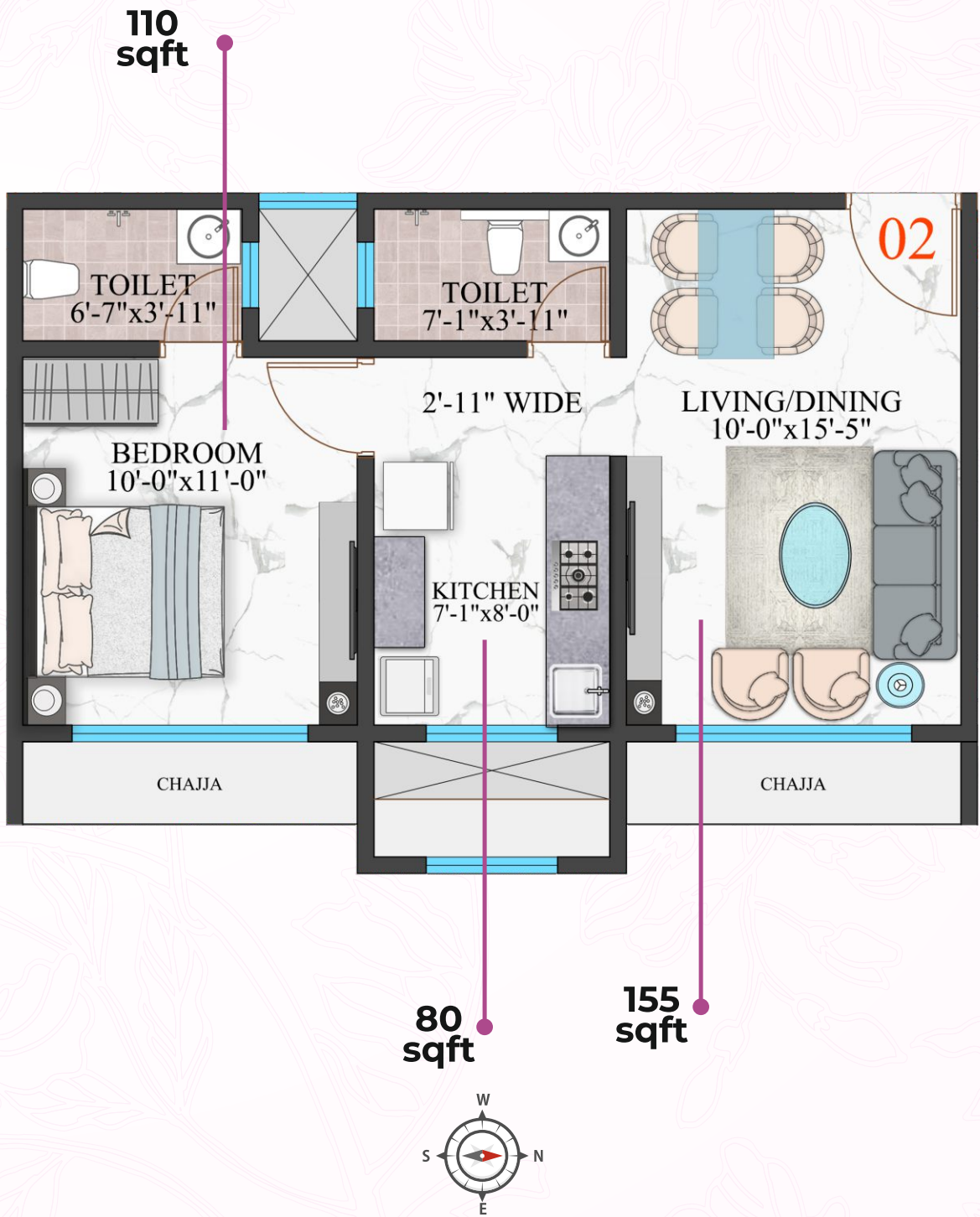
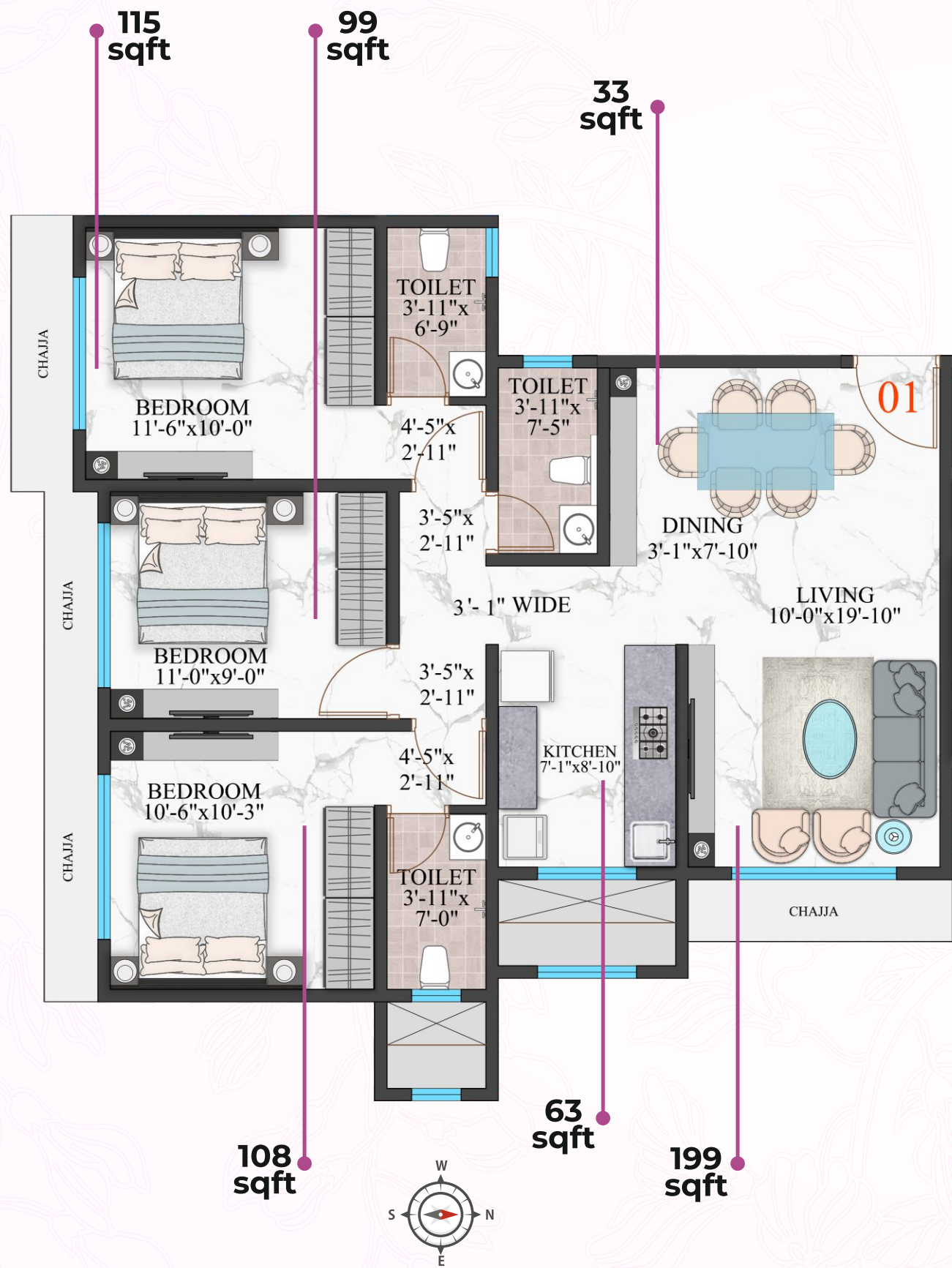






Floor Plan







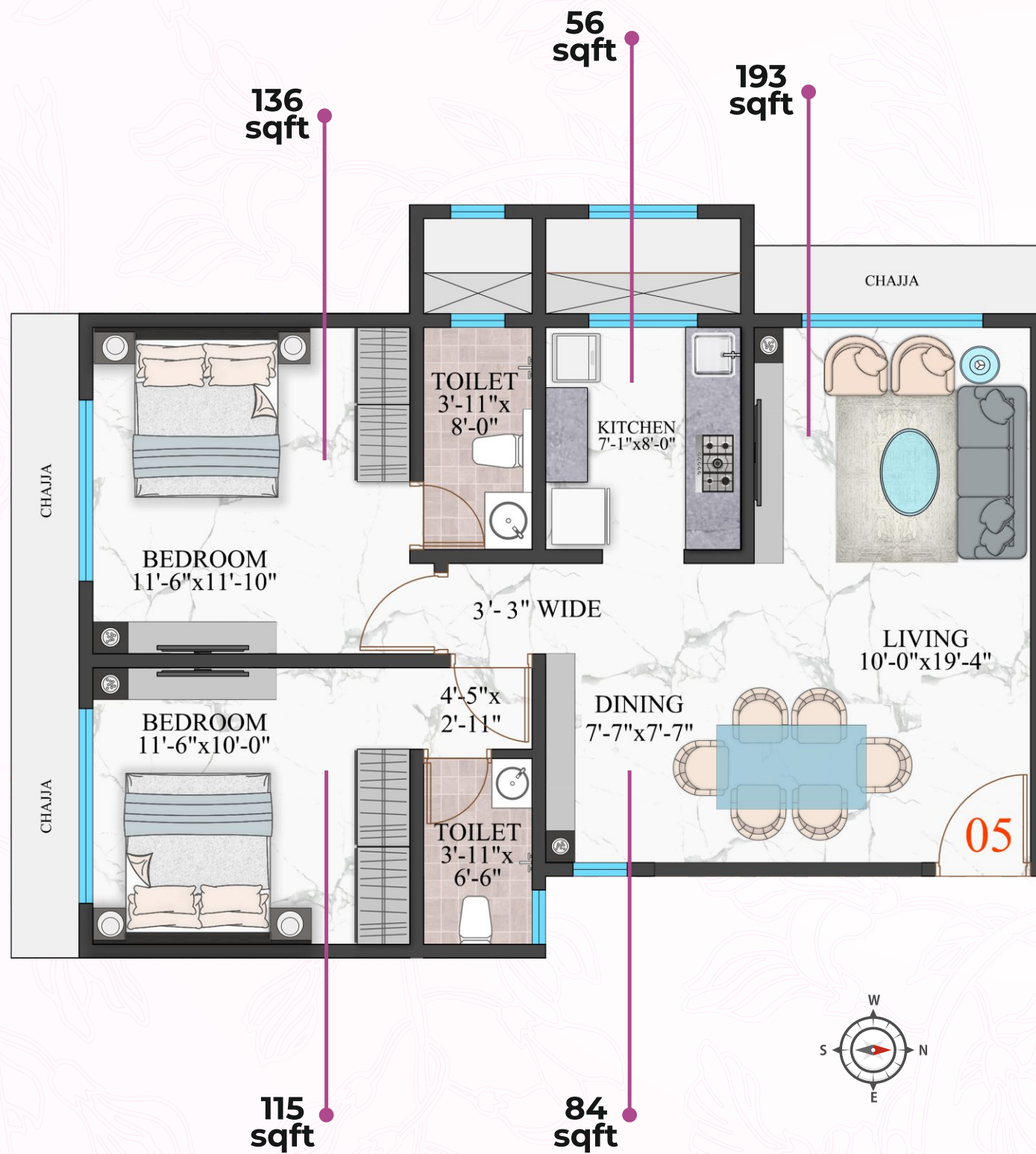


2 BHK Plan  
RERA Carpet Area  
**674 sqft**



**1 BHK Plan**  
RERA Carpet Area  
**422 sqft**





**2 BHK Plan**  
RERA Carpet Area  
**706 sqft**

Homes that  
celebrate beauty of  
*Togetherness*





Reclaim a lifestyle, that's distinctly higher Offering world-class facilities and amenities, Wisteria is a abode that will make sure you live hale and hearty.

#### BUILDING AMENITIES

- Double height Grand Entrance Lobby with A/C
- Rooftop Terrace Garden
- Rooftop Gazebo sitting
- Party Lawn
- Jogging Track
- Open to sky gym
- Fully Functional boutique Gym
- Society Office
- Kids Play Area
- Tower Parking System
- Electric Charging Pods for Electric vehicle

#### FLAT AMENITIES

- Ducts in Kitchen for additional Utilities
- Piped Gas System
- MS Safety Grills
- Branded bathroom Fittings

#### SECURITY

- Video door phones
- CCTV
- Intercom facility connecting to the security cabin

Isometric View of Roof Top



Rooftop Seating



Entrance Lobby



Indoor GYM



Rooftop Yoga



Mechanical Parking

Children Play Area



Rooftop Garden



Rooftop Gazebo



EV Charging Pods



West



East



MODIREALTY  
WISTERIA



South



North



Actual Views



Founded in 1971, Mr. Shyamsunder Modi sowed the seeds of the Modi Group. Today, as the 4th generation of the family cements its place in the growing enterprise, the Modi Group enjoys a significant presence in the areas of Real Estate, Infrastructure Development, Fitness and Finance - Wealth Management & Stock Broking. Modi Group is a family run company, which is an integral factor differentiating us from any other firm.

**MODIREALTY**  
**WISTERIA**

The project Modirealty Wisteria has been registered via MahaRERA Reg. No.: P51800034890. Information available at <https://maharera.mahaonline.gov.in>

Disclaimer: This brochure is conceptual, and does not constitute a legal offering. All Plans, Specifications, designs, elevations, features, amenities, facilities and services mentioned in the brochure are indicative of the kind of Development Proposed for this project and is for representational purposes only, and its finality is subject to the approval of the respective authorities or as required by Modirealty in the interest of continuing improvement, without prior notice or obligations. The furniture/images shown in the plan is only for the purpose of illustrating a possible layout and does not form a part of the final offering. Easy home loans available from leading institutions

**51+**

Years of experience

**56+**

Landmark Projects Delivered With OC

**1000+**

Happy Homes Happy Families

**6+**

Upcoming Projects

For more details  
scan QR Code

Head Office  
7th Floor, Prem Sagar,  
N.S.Road No.3,  
Juhu, Vile Parle (w), Mumbai,  
Maharashtra 400056

Site Address  
Modirealty Wisteria,  
Upper Mahavir Nagar,  
off Link Road, Kandivali West,  
Mumbai 400067

Sales Enquiry  
**02268493489**  
**+91 9920602900**

[www.modirealty.com](http://www.modirealty.com)

Version August 2022

